



# Directions & Times



# Exhibitions

10 September - 13 November 2011

## Community Gallery

### Neue Bahnstadt Opladen: Faces & Places

Werner Breden, Closed Gates, 2009



Opening Reception: Friday 9 September, 6.30-8pm – all welcome

Opladen, the twin town partner of Bracknell, is remaking itself. A diverse urban quarter is emerging where life used to revolve around the maintenance of trains and engines. In 2009-2010, the photographic society VFkB documented this change in two projects. The black and white portrait series by Michael Irmser captures the human side of this transition in sixty faces, whereas

the seventy-three colour pictures by a team of photographers record the vacant sites and symbols of the once busy railway plant. The exhibition presents a small selection from both series.

Opladen is part of Leverkusen, the twin town of Bracknell.  
[www.vfkb-lev.de](http://www.vfkb-lev.de)



## How to Reach Us

Ringmead, Bracknell,  
Berkshire RG12 7PA

01344 484123

email: [exhibitions@southhillpark.org.uk](mailto:exhibitions@southhillpark.org.uk)

www: [southhillpark.org.uk](http://southhillpark.org.uk)

### By Car:

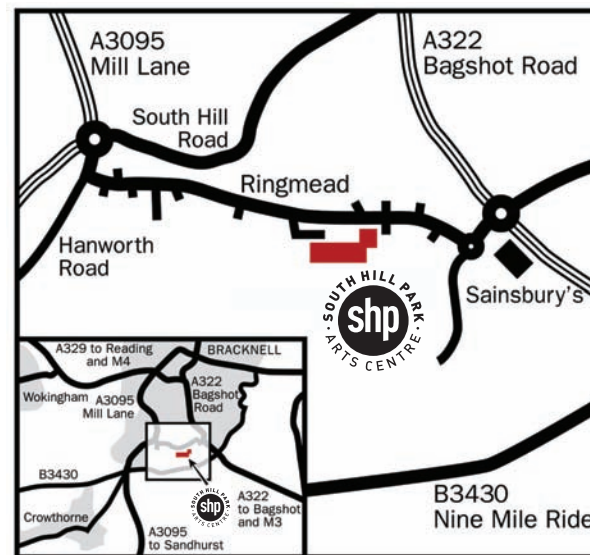
South Hill Park Arts Centre is in the Birch Hill area of Bracknell about 7 minutes drive from the Town Centre just off the A322 Bagshot Road near the Hilton National Hotel. It is easily accessible from the M3 (Junction 3) and the M4 (Junction 10). We are very well sign posted - look for the brown road signs saying 'Arts Centre' or showing a comedy mask.

### By Train:

Bracknell is well served with train services from London Waterloo, Reading and towns in the surrounding area. The central bus station is just outside the rail station, alternatively there is a taxi rank.

### By Bus:

Bracknell is well served with bus services from Reading, London Victoria and towns in the surrounding area. There is a taxi rank just outside the central bus station. Buses 158, 159, 171 & 172 (to Sainsbury's) and 194 (to South Hill Road/Salve Close) pass by the Arts Centre.



### Mansion Space Galleries

Monday to Saturday 9am - 11pm

Sundays and Bank Holidays  
11am - 10.30pm

### Bracknell Gallery

Wednesday 7pm - 9.30pm

Thursday to Saturday 1pm - 9.30pm  
Sunday 1pm - 5pm

Find us at: [facebook](#) and

[twitter](#)

(type Exhibitions and SHP/South Hill Park)

**kallkwik**<sup>®</sup>  
business design + print

Telephone: 01344 862344

[sales@bracknell.kallkwik.co.uk](mailto:sales@bracknell.kallkwik.co.uk)

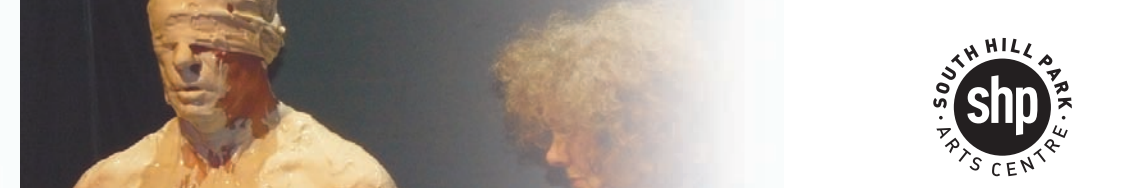


South Hill Park Limited Trust.  
A charitable Company Limited by Guarantee Registered in England No. 265656

**FREE  
ADMISSION**



Kung Chia Wei, A+B=?, video, 2009, 3'00" (still image)



Bracknell Gallery and Mansion Space Galleries

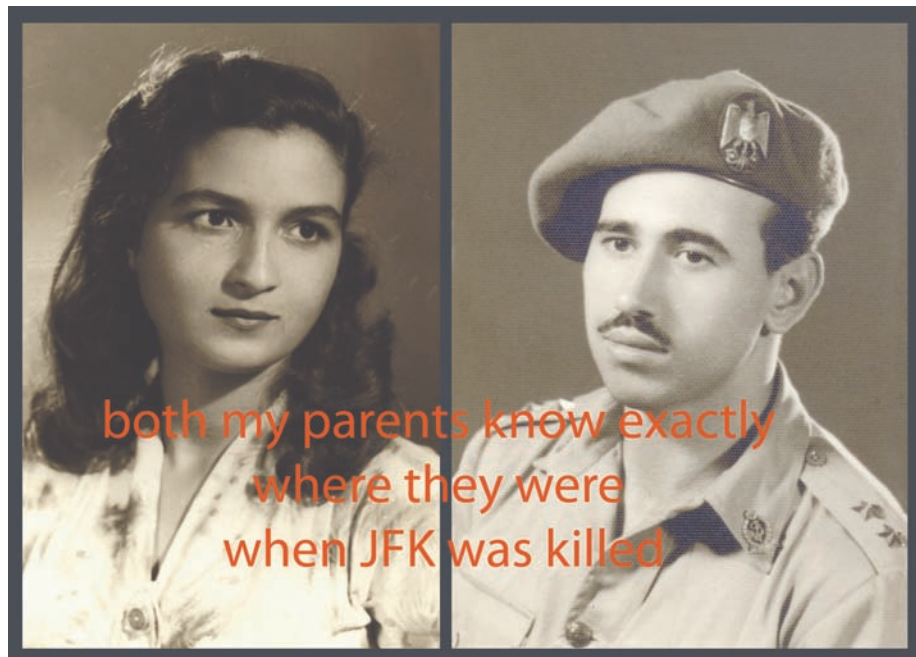
Beautiful Life: Memory and Nostalgia

Opening Reception: Friday 9 September, 6.30-8pm - all welcome

Talk by artist Lala Meredith-Vula, introduced by curator Dr Ming Turner, 9 September, 5.30-6.30pm

Migration and travelling across geopolitical borders have always been important elements of man's activity throughout history. In recent decades, owing to the rapid development of

transportation, travelling across borders has become a more influential issue in modern society, and it has created the phenomena of displacement and hybridised cultures. The exhibition explores the ideas of travelling, nostalgia, memory, and the issues of identity, covering various themes of postcolonialism, including diaspora, the sense of belonging and authenticity. Ten international artists explore these expectations of the Beautiful Life – both its illusion and disillusion.



Khaled Hafez, The Third Vision: Around 01:00pm, 7 minutes, video, 2008 (still image)

Bracknell Gallery and Mansion Space Galleries

Lala Meredith-Vula, Shifting Borders, digital image, 2006-7 (detail)

The project exhibits works by David Alesworth (Pakistan/UK), Magda Biernat (USA/Poland), Wen-Jen Deng (Taiwan), Paul Gent (UK), Khaled Hafez (Egypt), Huma Mulji (Pakistan), Anna Lucas (UK), Lala Meredith-Vula (UK), Chia-Wei Kung (Taiwan) and Josephine Turalba (Philippines).



touching upon the techniques these artists use. The series will also suggest some great places where you can see outdoor sculpture.

The course is led by Melanie Paice, Artist and Art Lecturer. Melanie has lectured at Tate Modern, Dulwich Picture Gallery and Surrey Adult Learning, she teaches at South Hill Park and Riverhouse Gallery. Melanie set up the Tours Programme for Tate Modern, Tate Britain and Frieze Art Fair.

The course coincides with the new sculpture commission for the South Hill Park grounds by Fred Baier and Lucy Strachan, as part of the Heritage Lottery funded Parks Project.

NEW: ART HISTORY AT SHP Art in the Open Air: An Introduction to Modern Sculpture

5th Oct, 19th Oct and 2nd Nov, 7.30-9.30pm £35/£31.50 students & members Bookings via SHP box office, tel: 01344 484123

This new series of talks will provide an introduction to modern British Sculpture, looking at what led to dramatic changes and examining the work of some key players in British sculpture from Barbara Hepworth and Henry Moore to Antony Gormley, Tony Cragg and Andy Goldsworthy

13-16 October 2011 Wilde Theatre/Ceramics Studio

A throne is only a bench covered in velvet Adam Marsh, Resident in ceramics at South Hill Park

Opening Reception: Thursday 13 October, 7-8.30pm – all welcome



Adam Marsh: A throne is only a bench covered in velvet. Installation view, South Hill Park, 2011 (detail)

The theatre can be an empty space of over-looked beauty, but within its walls lays a store of social stereotypes and a history of divisions in social class. The resident ceramist Adam Marsh sets out to create stories and relationships between site-specific place and the ceramic pieces within the installation.

A throne is only a bench covered in velvet explores the social stereotypes created in theatre space. With themed groups of ceramics placed around the tiers of seating in the theatre auditorium, the colour and form of the ceramics considers class systems and one's assumptions about status.

Changing roles, performance art visits the Ceramics Studio. Body Body Clay Pane by Philip Lee and Cally Trench 13 October after the opening, 8.30pm

A live body performance with clay devised in response to Adam Marsh's installation. Philip Lee and Cally Trench will struggle to cover each other in clay slip. Colluding in the discomfort and punishment each will be playing by particular rules unknown to the viewer, and at times to each other. The performance contains nudity.

www.philiplee.co.uk

Tied Slip II, 2011. Firestation Arts Centre, Windsor. Photograph: Emma Harris

